



Delaware County
New York

PARKING!

Parking is available at the trail head in Bloomville north of Route 10, and in Stamford at the depot on Railroad Avenue.

CAUTION!

NO ATVs (all-terrain vehicles) or other unauthorized motor vehicles are allowed on the Catskill Scenic Trail.

SAFETY!

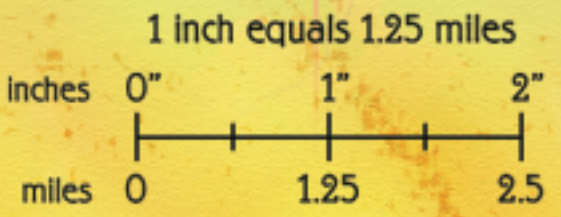
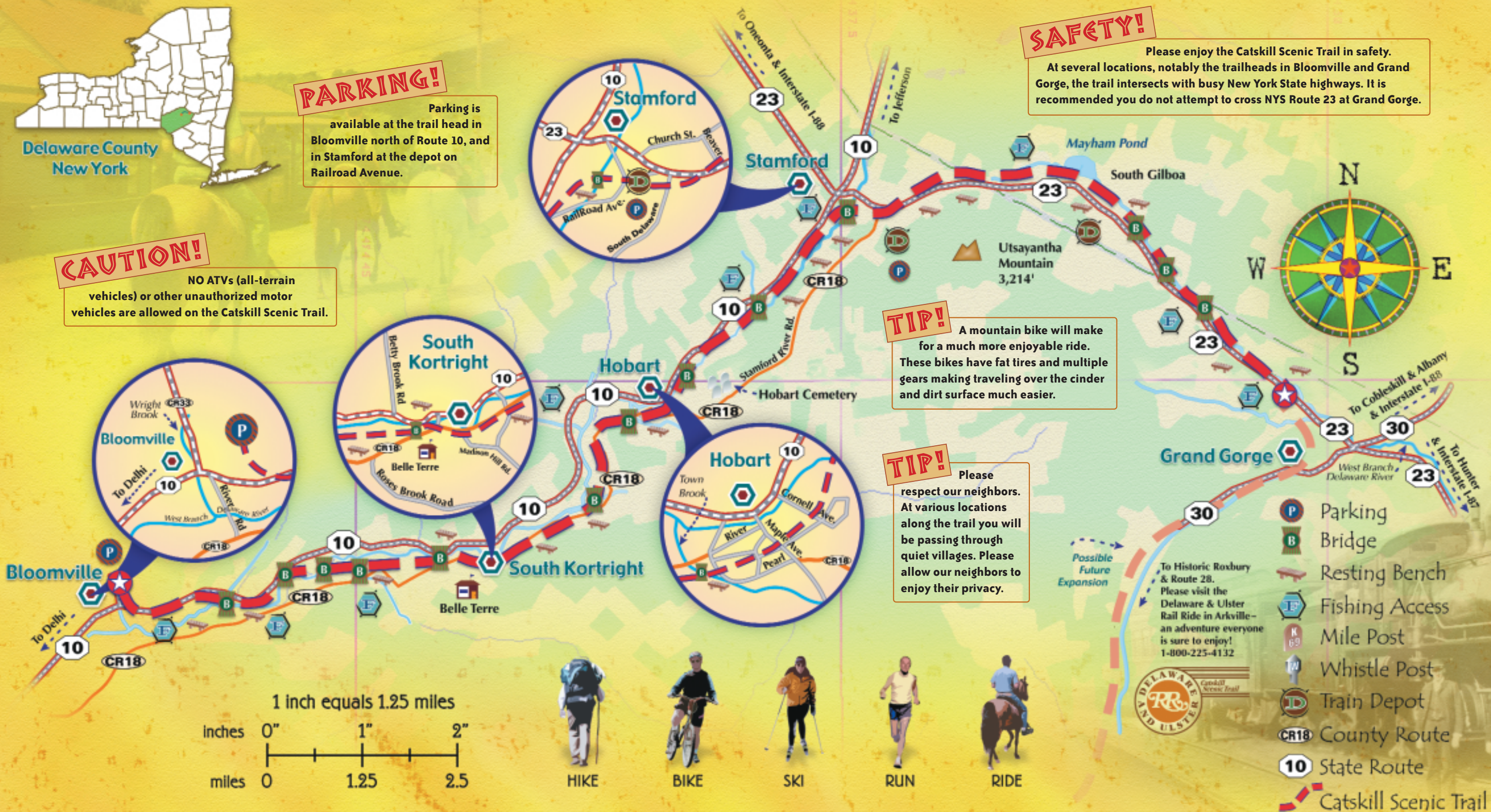
Please enjoy the Catskill Scenic Trail in safety. At several locations, notably the trailheads in Bloomville and Grand Gorge, the trail intersects with busy New York State highways. It is recommended you do not attempt to cross NYS Route 23 at Grand Gorge.

TIP!

A mountain bike will make for a much more enjoyable ride. These bikes have fat tires and multiple gears making traveling over the cinder and dirt surface much easier.

TIP!

Please respect our neighbors. At various locations along the trail you will be passing through quiet villages. Please allow our neighbors to enjoy their privacy.



HIKE BIKE SKI RUN RIDE

- Parking
- Bridge
- Resting Bench
- Fishing Access
- Mile Post
- Whistle Post
- Train Depot
- County Route
- State Route
- Catskill Scenic Trail



To Historic Roxbury & Route 28. Please visit the Delaware & Ulster Rail Ride in Arkville—an adventure everyone is sure to enjoy! 1-800-225-4132